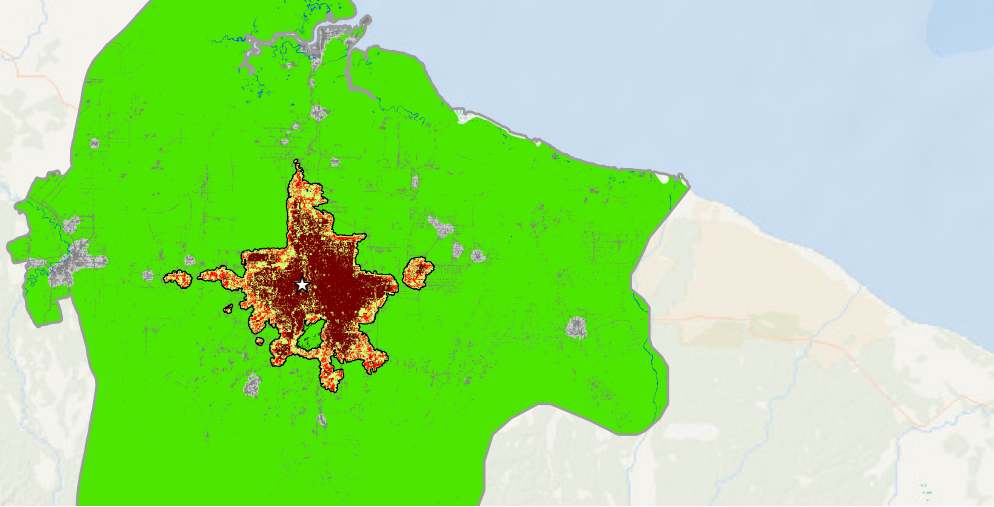
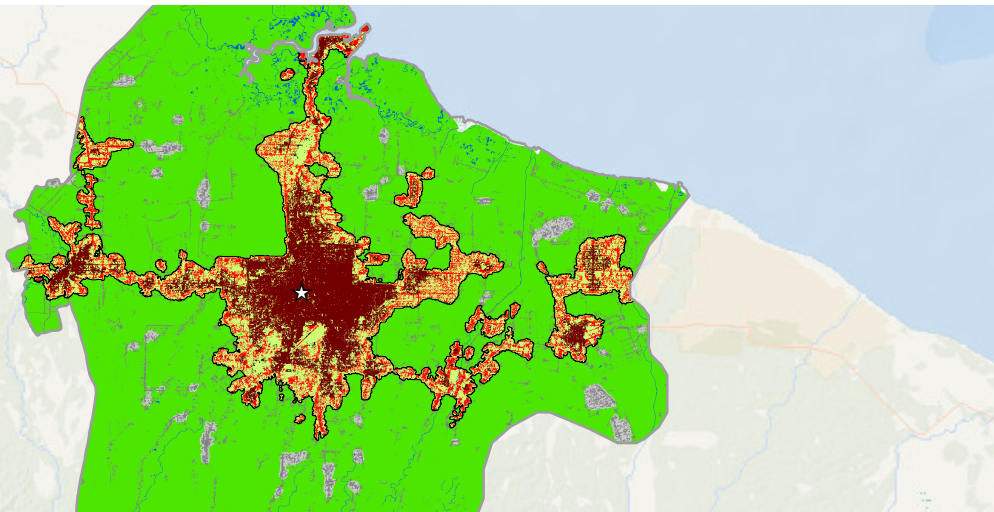


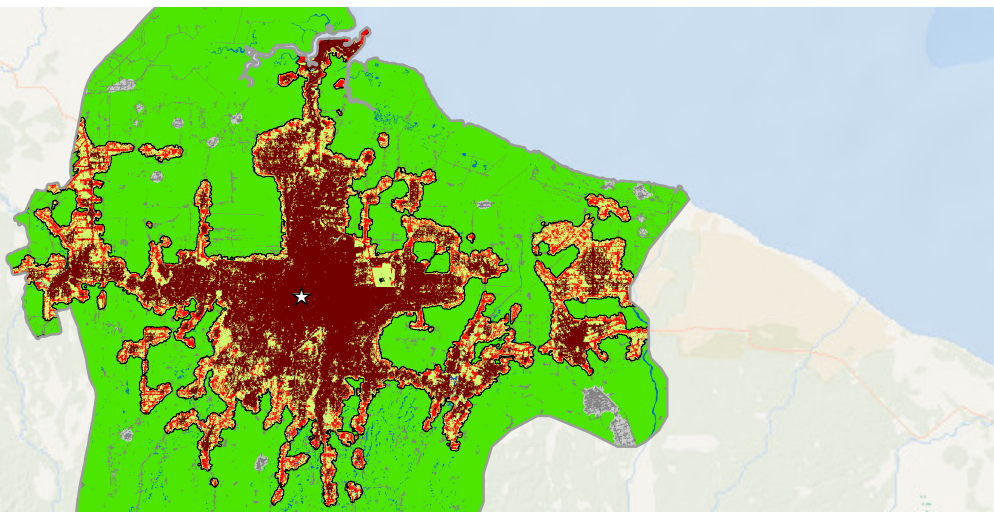
Jun-1989



Jun-2001



Jun-2013



Medan, Indonesia 1989-2013

0 6 12 18 24 km



- | | | | |
|---|------------------------|--|-----------------------|
|  | Study area |  | Rural open space |
|  | Urban extent |  | Exurban built-up area |
|  | Urban built-up area |  | Exurban open space |
|  | Suburban built-up area |  | Water |
|  | Rural built-up area |  | No data |
|  | Urbanized open space |  | CBD |